



# Resistance Sensors (Low Water Detect Logic)

## Model NS157

### FEATURES

- 100% functionally tested
- Solid state sensing circuitry
- Isolated UL Class II sensing voltage
- 1/4" male fast-ons for circuit connection
- Conformal coating to protect circuit from harsh environments
-   File #E61377

**Operating Logic:** The output relay is activated when liquid touches the probe. As the liquid level drops below the probe, the relay is deactivated.

If the tank is non-conductive, a second (common) probe must be installed at a level where it will always be submerged.

### SPECIFICATIONS

#### CONTROL TYPE

**On/Off Resistance Sensing:** Probe resistance below set point activates output relay

**Sensing Voltage:** 20 VAC, max. RMS

**Sensing Circuit:** 2 mA, max. RMS

**Sensitivity Adjustment:** Factory set at 50 K ohms  $\pm 10\%$

#### INPUT

**Operating Voltage:** 120 VAC,  $\pm 10\%$

**Power Consumption:** 3.0 VA max.

**Frequency:** 50/60 Hz

#### OUTPUT

**Type:** SPDT relay, isolated contacts

**Rating:** 5 A resistive at 120 VAC 100 mA at 5 VDC min. load current

#### Life:

Mechanical: 2,000,000 cycles

Electrical: 100,000 min. at full load

#### PROTECTION

**Isolation:** 1500 VAC between probe and other terminals

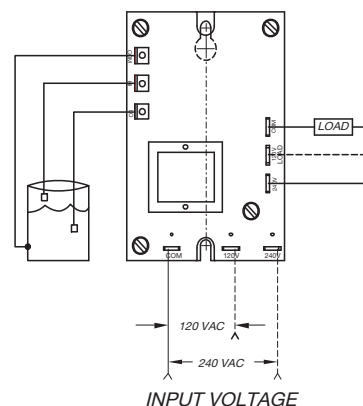
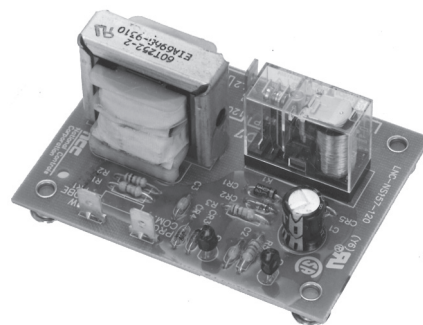
#### MECHANICAL

**Terminations:** 1/4" x .032" male fast-ons

**Mounting:** 4 -.141" dia. mounting holes

#### ENVIRONMENTAL

**Operating Temperature:** 0°C to 70°C



**INPUT VOLTAGE**  
NOTE: MUST USE COM TO 120V OUTPUT WHEN 120V INPUT IS USED  
MUST USE COM TO 240 V OUTPUT WHEN 240 V INPUT IS USED

## ORDERING INFORMATION

LOGIC TYPE	INPUT VOLTAGE	PART NUMBER
Low Water Detect	120 VAC	LNC-NS157-120

ACCESSORY	PART NUMBER
Probe Holder with Ground	LLH-11383-010
Probe, 6" Long, 1/4" Dia., S.S.	LLP-06.00-OSS
Probe, 12" Long, 1/4" Dia., S.S.	LLP-12.00-OSS
Probe, 24" Long, 1/4" Dia., S.S.	LLP-24.00-OSS
Probe Assembly, Plastic Body	LLP-001/2-011